



ellenex solutions for HVAC and smart buildings

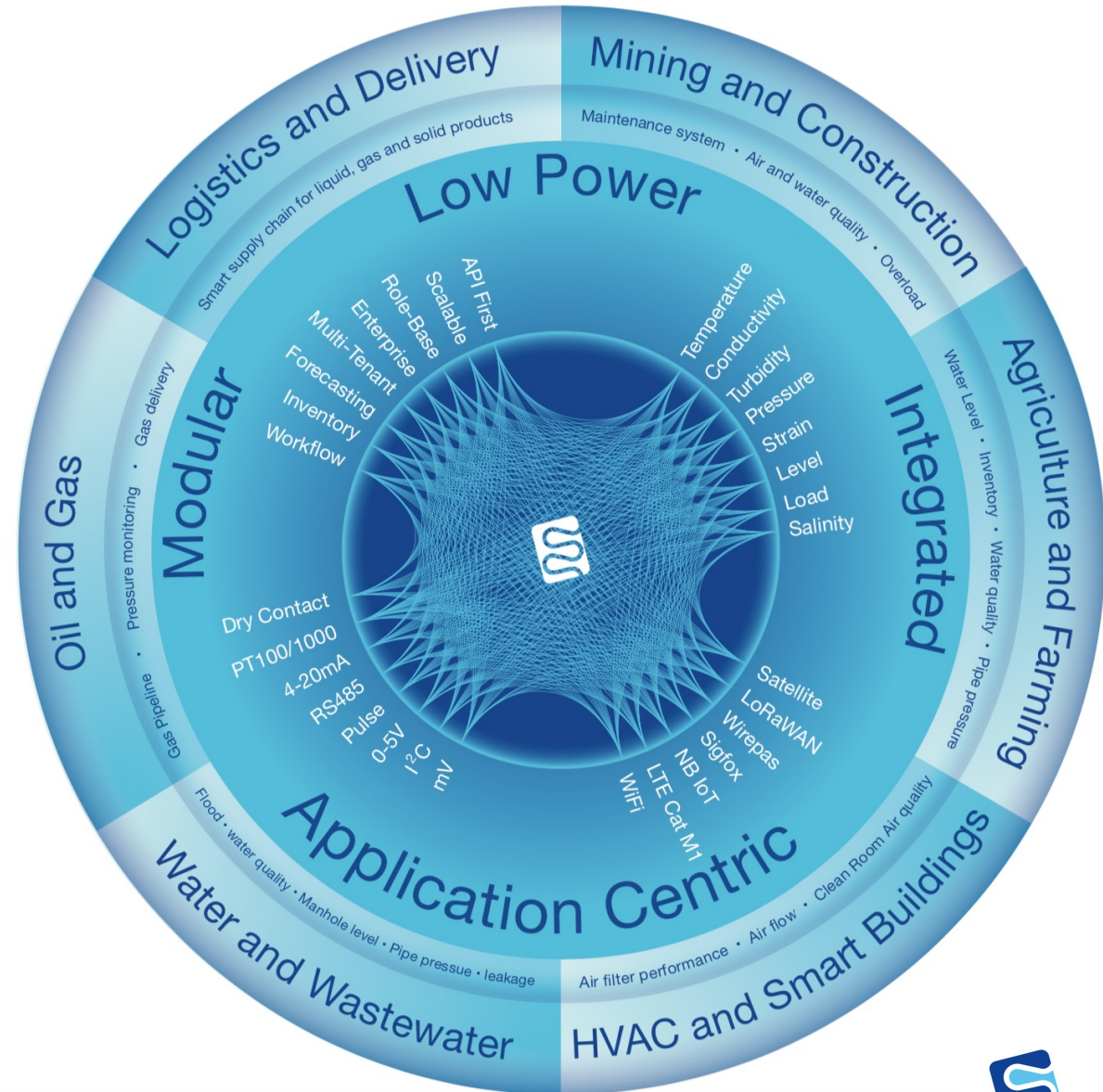
Low Power, Integrated, Composable, Application Centric

ellenex

Industrial low power IoT

At ellenex, we believe industrial IoT solutions need to be **modular**, **integratable** and **application centric** to make them scalable and profitable for customers. ellenex IoT framework designed to address these needs.

- Simplified
- Reliable IoT solutions
- Designed to reduce your operational costs



Our global support

We are offering professional support to our partners and customers in more than 50 countries. Our technical and sales channels provide exceptional support to be sure our customers are getting the ultimate benefit from our solutions and technologies.





ellenex solutions for

HVAC and smart buildings

Type text

©2019 Proprietary and Confidential. All Rights Reserved.

Our focused sectors



governmental buildings



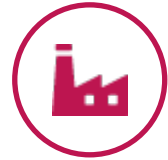
shopping centres



schools and universities



highrise buildings



industrial buildings



convention centres



hospitals and medical centres



childcare and age care



pools and aqua-centres



hotels and Air bnb



airports and terminals



restaurants

Our niche solutions

We offer solutions with added value for large industrial, commercial and governmental buildings and infrastructures





ellenex
products

filter performance monitoring

- pressure
- temperature
- flow

And sensor interface for:

- air quality
- humidity
- Vibration
- others



Other key products:



PT2S2

for pipeline
pressure and
tank level
monitoring



PLS2

for precision
level monitoring



TTS2

for water
temperature
monitoring



FMS2

for water usage
checking

ellenex electronic interfaces

I2C

mV

mV/V

Pulse

RS485

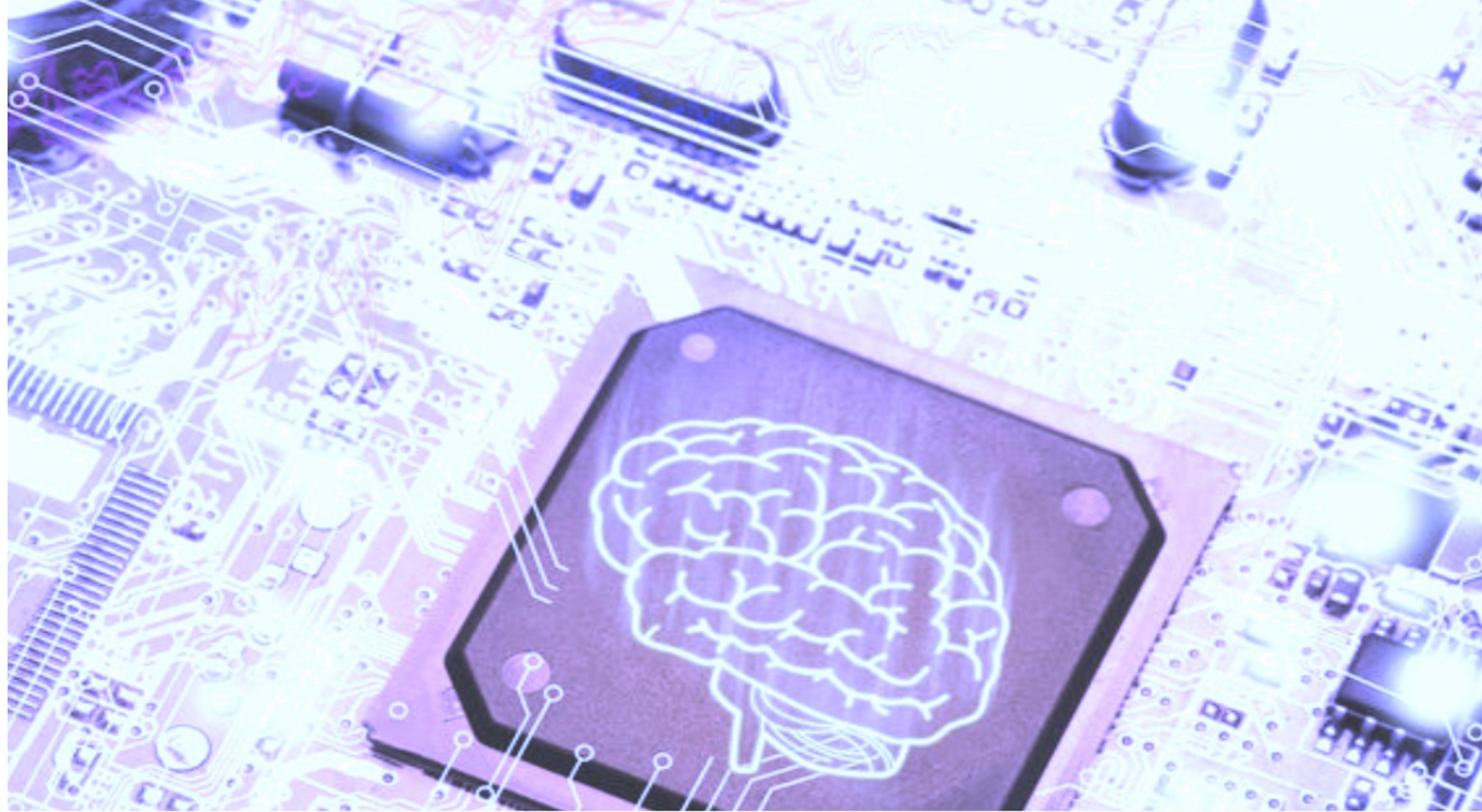
PT1000/ 100

4-20mA

0-5/ 0-10V

Dry contact

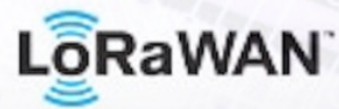
Multi-channel



NB-IoT



SATELLITE



LoRaWAN



SIGFOX



WIREPAS



Wi-Fi



ellenex software platform

Designed for enterprise
Role-based access control
API-first
Simple and scalable
Custom workflow engine
Custom device parameters
Multi-channel alerting
BMS system integratable





if you are a service provider for commercial
buildings or residential complexes,

Just send an email to
sales@ellenex.com and we will contact
you to discuss your application.



ellenex

IoT solutions for action