



ellenex solutions for mining and construction

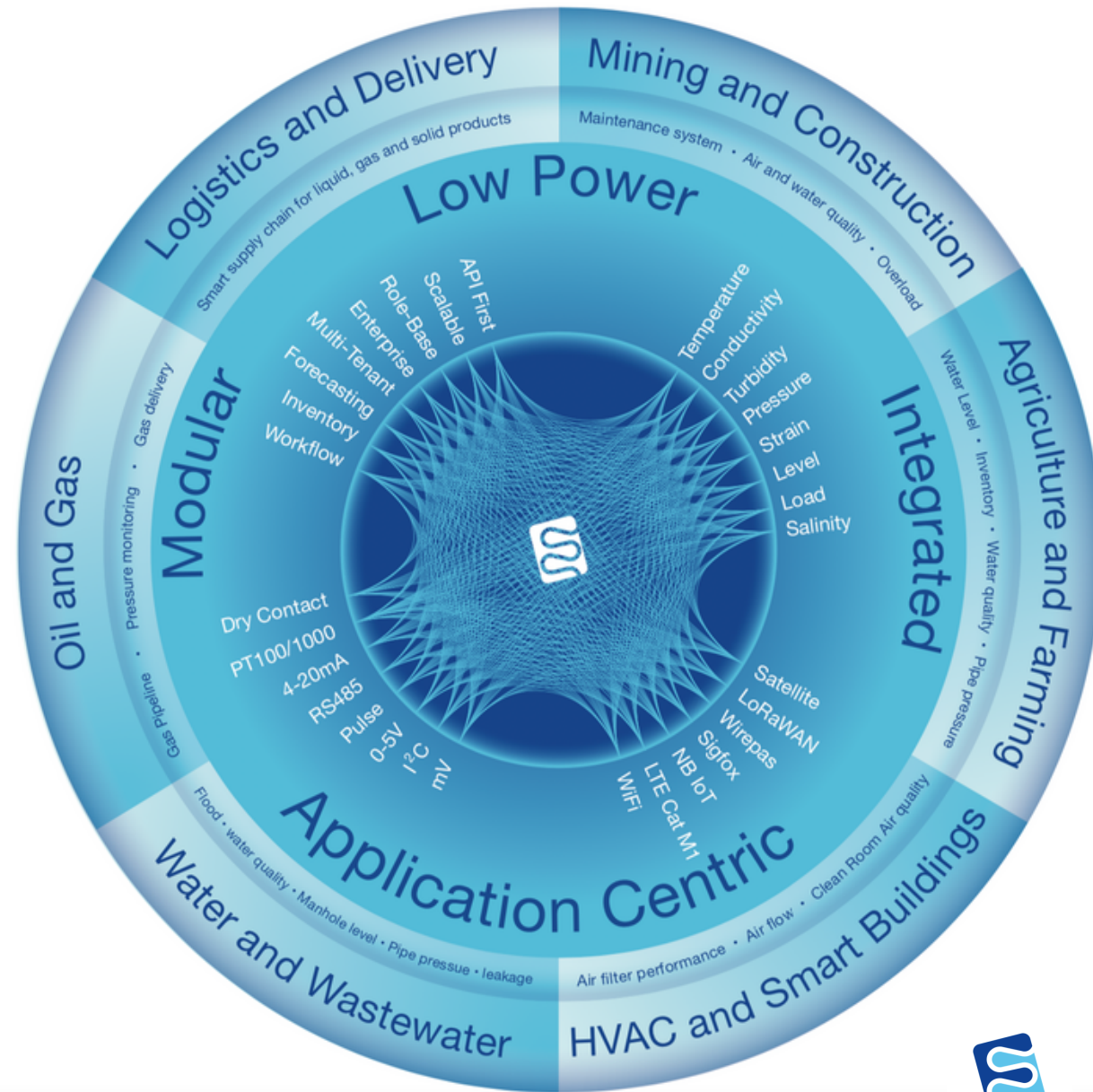
Low Power, Integrated, Composable, Application Centric

ellenex

Industrial low power IoT

At ellenex, we believe industrial IoT solutions need to be **modular, integratable** and **application centric** to make them scalable and profitable for customers. ellenex IoT framework designed to address these needs.

- Simplified
- Reliable IoT solutions
- Designed to reduce your operational costs



We

Cover all your industrial IoT needs



Manufacture industrial sensors

Pressure, Level, Temperature, Differential Pressure, Load, Strain, Water Quality, Air Quality

Design low power interfaces

NB IoT, LTE Cat M1, LoRaWAN, Low Power Satellite, Sigfox, Wirepas, Low Power WiFi

Integrate microservice platform

Designed for enterprise, Role-based, API-first, Integratable, Multi-tenant, Dynamic alerting

Our global support

We are offering professional support to our partners and customers in more than 50 countries. Our technical and sales channels provide exceptional support to be sure our customers are getting the ultimate benefit from our solutions and technologies.





ellenex solutions for

mining and construction

Our added value

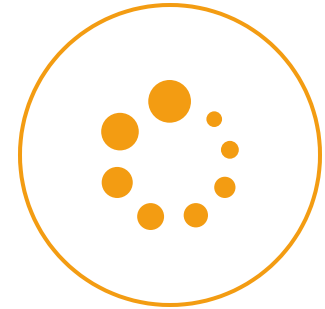
We offer solutions for better management



predictive maintenance



supply management



workflow management



asset management



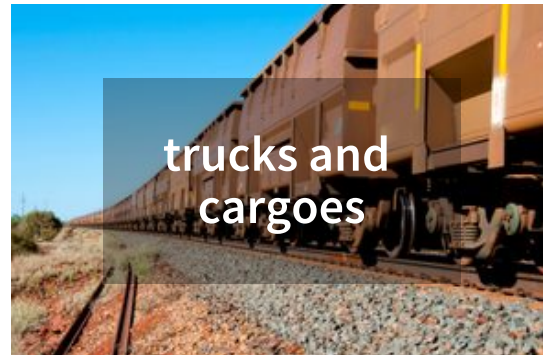
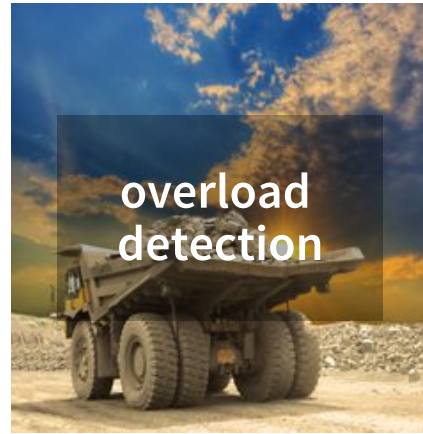
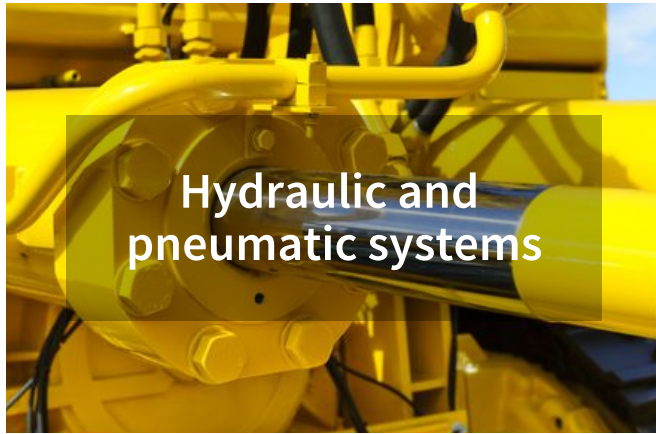
service management



safety and event prediction

Our focused applications

end to end, application centric and integratable



A close-up photograph of a yellow hydraulic cylinder. The cylinder is painted a bright yellow and has several hexagonal bolts around its mounting flange. A polished chrome rod extends from the center of the cylinder. The background is slightly blurred, showing more yellow machinery.

hydraulic and pneumatic systems

pressure monitoring on hydraulic systems is essential for proactive maintenance and asset health monitoring

- **hydraulic actuators**
- **air compressors**
- **pumps**

overload detection

ellenex offers state of the art solutions for overload monitoring systems

- **trucks**
- **handling equipments**
- **conveyors**
- **filters**



HVAC and air supply



- airflow monitoring
- filtration system performance monitoring
- temperature monitoring
- air quality

trucks and cargoes

- load monitoring
- pressurised systems
- filter performance monitoring



water and wastewater



- water tank level monitoring
- water pipelines
- Pumps and water supply
- sewage overflow measurement
- borehole monitoring

material handling systems

- overload monitoring
- hydraulic systems
- air supply systems
- temperature monitoring



tracking systems

- mobile assets tracking
- load monitoring
- service management





event prediction

Industrial internet of things brings unique opportunity to provide valuable data and action for event prevention, preparation and management.

- **flood prediction and management**
- **water for fire fighting**
- **structural health monitoring**



ellenex
products

Our key products for water industry



PTS2

pipeline
pressure and
tank level
monitoring



PLS2

precision level
monitoring



CSD2

conductivity
and salinity



TTS2

water
temperature
monitoring



CTR2

water turbidity
checking

pressures measurement

- leak detection
- pump performance
- hydraulic systems
- liquid tanks level monitoring
- water valves performance monitoring



level measurement

- water resources
- water supply tank
- sewage tanks
- chemical dosing systems
- fuel supply
- overflow monitoring
- flood monitoring
- manhole level monitoring



water quality

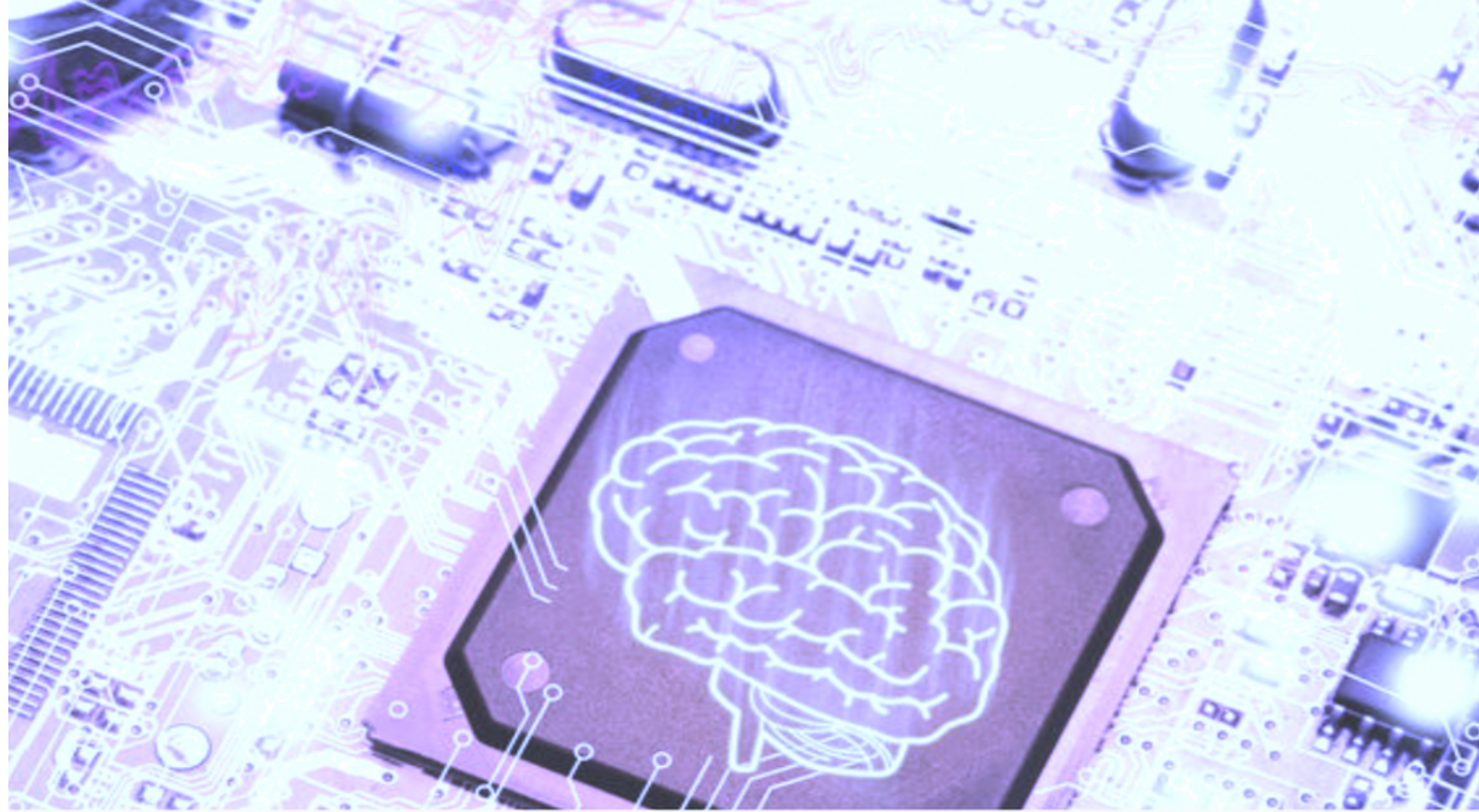
- conductivity
- salinity
- temperature
- turbidity
- pH
- dissolved oxygen



ellenex electronic interfaces

I2C
mV
mV/V
Pulse
RS485
4-20mA
0-5/ 0-10V
Dry contact
PT100/ 1000

Multi-channel



NB-IoT



SATELLITE



LoRaWAN



SIGFOX



WIREPAS



Wi-Fi



ellenex software platform

Designed for enterprise
Role-based access control
API-first
Simple and scalable
Custom workflow engine
Custom device parameters
Multi-channel alerting
SCADA system integrable





**If you are a mining company ...
or providing solutions and services to mining companies ...
we may have some great solutions for you. Please send an email
to sales@ellenex.com and we will contact you to discuss your
application.**

Thank you

