



ellenex solutions for water and wastewater

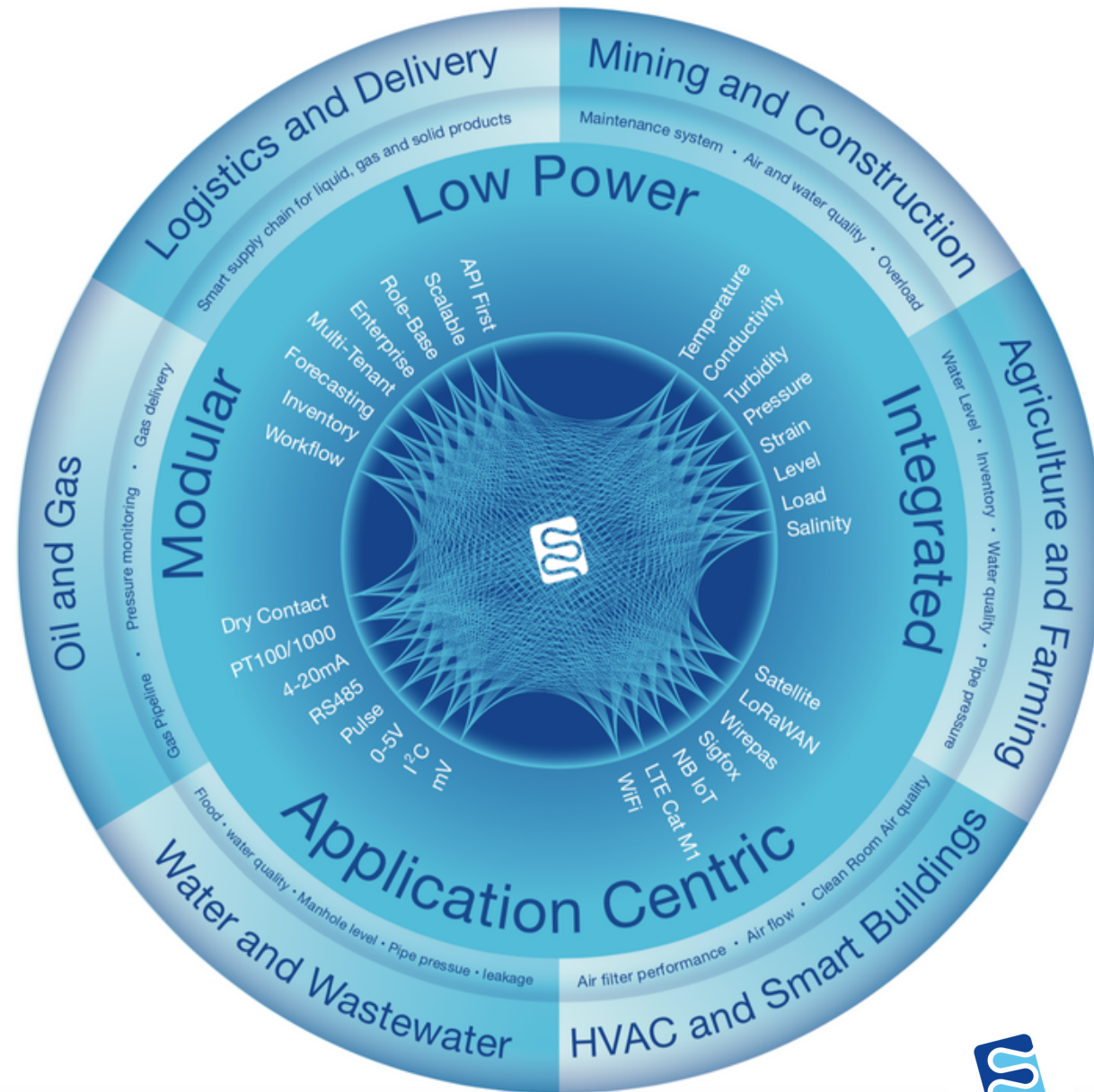
Low Power, Integrated, Composable, Application Centric

ellenex

Industrial low power IoT

At ellenex, we believe industrial IoT solutions need to be **modular**, **integratable** and **application centric** to make them scalable and profitable for customers. ellenex IoT framework designed to address these needs.

- Simplified
- Reliable IoT solutions
- Designed to reduce your operational costs



We

Cover all your industrial IoT needs



Manufacture industrial sensors

Pressure, Level, Temperature, Differential Pressure, Load, Strain, Water Quality, Air Quality



Design low power interfaces

NB IoT, LTE Cat M1, LoRaWAN, Low Power Satellite, Sigfox, Wirepas, Low Power WiFi



Integrate microservice platform

Designed for enterprise, Role-based, API-first, Integratable, Multi-tenant, Dynamic alerting

Our global support

We are offering professional support to our partners and customers in more than 50 countries. Our technical and sales channels provide exceptional support to be sure our customers are getting the ultimate benefit from our solutions and technologies.





ellenex solutions for

water and wastewater

Our focused sectors

We offer solutions with added value



Water is the most critical resource for residential and industrial activities. We offer accurate, easy to use and low cost solutions to manage water resources efficiently.

- **Water leakage**

Preventive water leakage management system across the water network

- **Pipeline monitoring**

Hot and cold water pipeline pressure and temperature monitoring/ water flow

- **Operational systems**

Pump performance/ Valve operation monitoring/ Desalination plant and osmotic pressure monitoring/ cloud based water tank re-fill system





water resource management

Knowing the level of available water resources is critical for any water utility management system. ellenex offer accurate easy to use solution for water resource management and prediction.

- **Level measurement**

We offer floatable level sensor designed for dams and lakes/ Water well and bore hole/ hydraulic networks/ surface water and channels/ rain water tanks

- **Dynamic volume calculation and prediction**

ellenex offers instant volume calculation for complex surfaces for resource availability prediction. This solution is easily integratable to SCADA systems.

- **Quality monitoring**

Turbidity/ temperature/ conductivity/ salinity/ dissolved oxygen/ pH

ellenex offers state of the art solutions for wastewater management systems and bring better monitoring with lower operational cost for:

- Sewage overflow measurement
- Pressurised wastewater pipelines
- Pumps and chemicals supply
- Wastewater tank level monitoring
- Treated water quality monitoring
- Chemical leakage detection





asset management

Preventive maintenance makes a significant saving in the operation costs of extremely expensive assets in water industry. Our wireless and battery-operated products and integratable platform, make this possible at a low cost.

- Pump performance monitoring
- Prescriptive maintenance
- Infrastructure health monitoring
- Filtration system performance monitoring
- Delivery Systems management
- Machinery and Plant Operation Monitoring
- Service Task Flow Management

With experience of working with the range of industries, ellenex offer application centric solutions for water and wastewater management in different industries.

- **Mining and Construction**
- **Food and Beverage**
- **Dairy and Meat processing**
- **Manufacturing and Heavy industries**
- **Councils and environmental monitoring**





event prediction

Industrial internet of things brings unique opportunity to provide valuable data and action for event prevention, preparation and management.

- **Flood prediction and management**

ellenex offers unique solution to water authorities for flood level prediction

- **Water for fire fighting**

Water hydrant pressure monitoring and water tank level monitoring gives instant data to make a proper decision to fire fighters.

- **Structural health monitoring**

During and after the disaster, it is very critical to know about the state of assets, bridges and building. we have a range of sensors to minimise the damage by unreliable assets.



ellenex

products

Our key products for water industry



PTS2

for pipeline
pressure and
tank level
monitoring



PLS2

for precision
level
monitoring



CSD2

for
conductivity
and salinity



TTS2

for water
temperature
monitoring



CTR2

for water
turbidity
checking

pressures measurement

- Leak detection
- Pump performance
- Network water pressure
- Pressurised Wastewater management systems
- Irrigation Pipeline
- Water hammer monitoring
- Water valves performance monitoring



level measurement

- Water resources
- Water supply tank
- Rain water tank
- Sewage tanks
- Chemical dosing systems
- Fuel supply
- Overflow monitoring
- Flood monitoring
- Manhole level monitoring



water quality

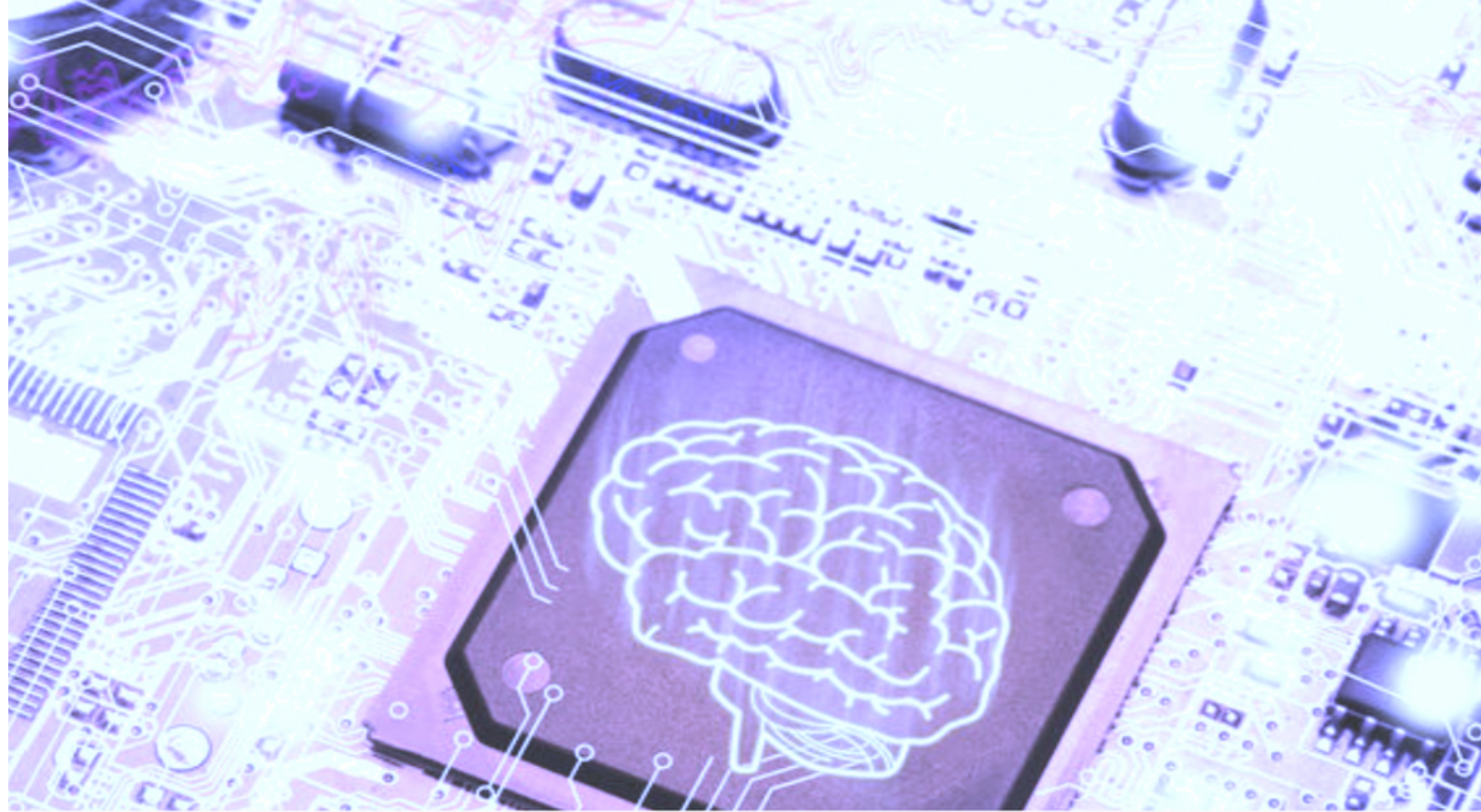
- Conductivity
- Salinity
- Temperature
- Turbidity
- pH
- Dissolved oxygen



ellenex electronic interfaces

I2C
mV
mV/V
Pulse
RS485
4-20mA
0-5/ 0-10V
Dry contact
PT100/ 1000

Multi-channel



NB-IoT



SATELLITE



LoRaWAN



SIGFOX



WIREPAS



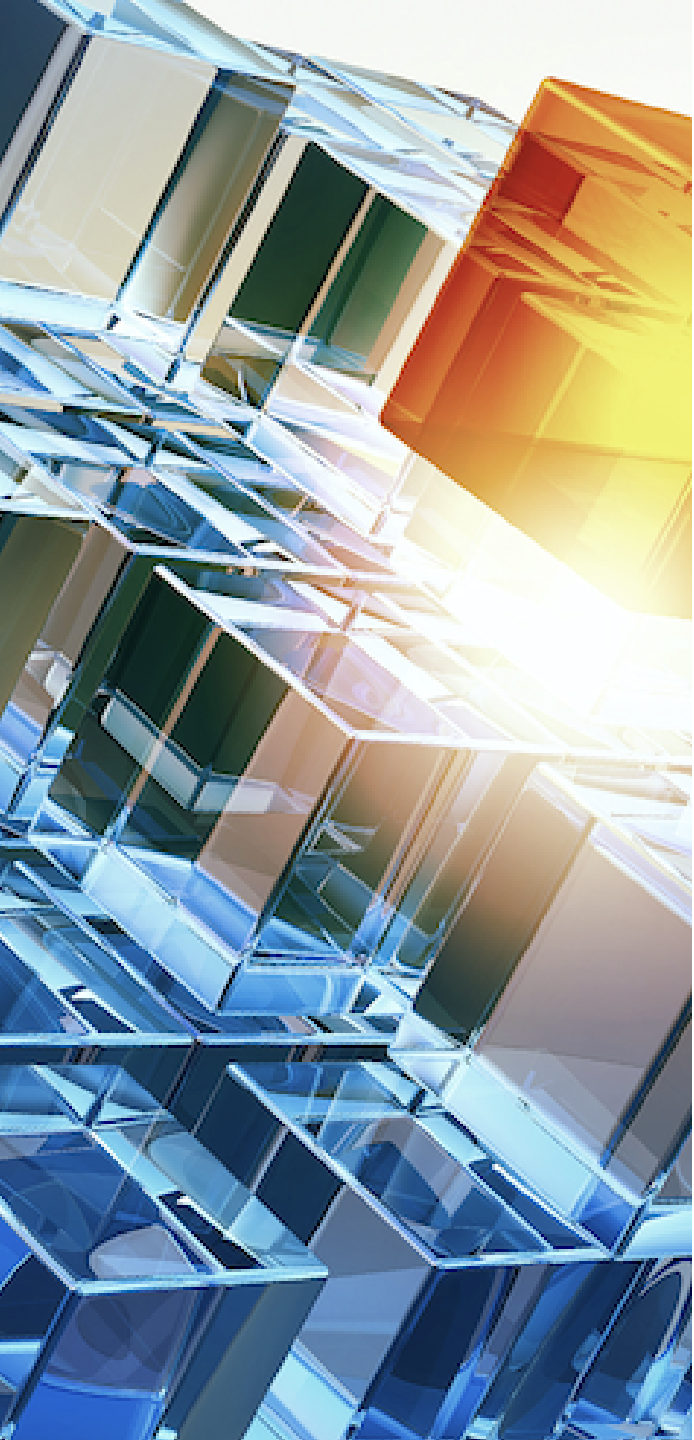
Wi-Fi



ellenex software platform

Designed for enterprise
Role-based access control
API-first
Simple and scalable
Custom workflow engine
Custom device parameters
Multi-channel alerting
SCADA system integratable





If your are a water utility company ...

**or providing solutions and services to
water utilities ...**

**we may have some great solutions for
you.**

**Please send an email to
sales@ellenex.com and we will contact
you to discuss your application.**

Thank you



IoT Solutions in Action

E: sales@ellenex.com

W: www.ellenex.com