



ellenex solutions for HVAC and smart buildings

Low Power, Integrated, Composable, Application Centric

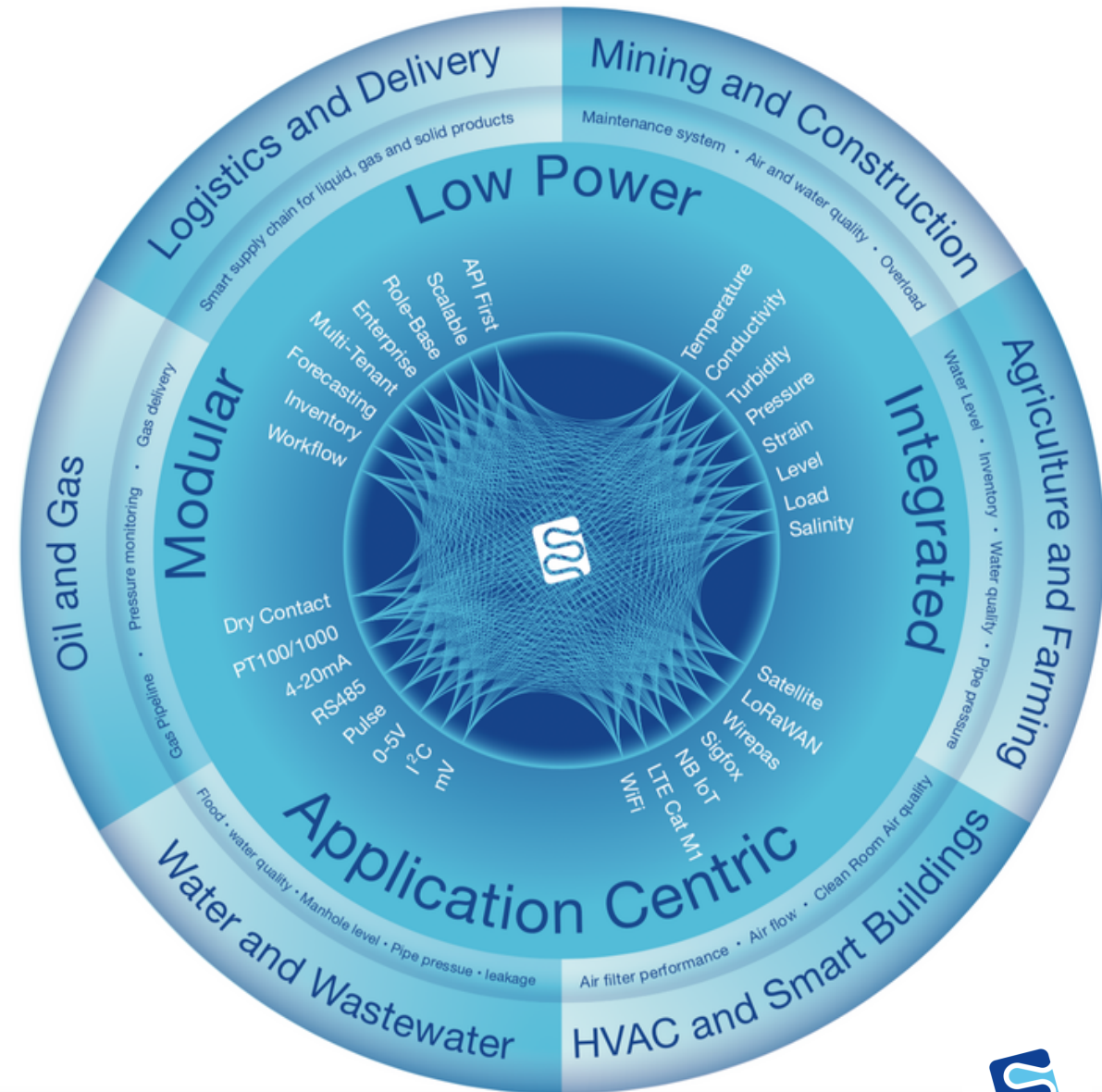


ellenex

Industrial low power IoT

At ellenex, we believe industrial IoT solutions need to be **modular**, **integratable** and **application centric** to make them scalable and profitable for customers. ellenex IoT framework designed to address these needs.

- Simplified
- Reliable IoT solutions
- Designed to reduce your operational costs



We

Cover all your industrial IoT needs



Manufacture industrial sensors

Pressure, Level, Temperature, Differential Pressure,
Load, Strain, Water Quality, Air Quality



Design low power interfaces

NB IoT, LTE Cat M1, LoRaWAN, Low Power Satellite,
Sigfox, Wirepas, Low Power WiFi



Integrate microservice platform

Designed for enterprise, Role-based, API-first,
Integratable, Multi-tenant, Dynamic alerting

Our global support

We are offering professional support to our partners and customers in more than 50 countries. Our technical and sales channels provide exceptional support to be sure our customers are getting the ultimate benefit from our solutions and technologies.

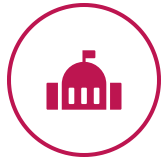




ellenex solutions for

HVAC and smart buildings

Our focused sectors



governmental buildings



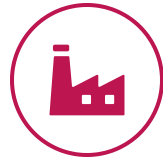
shopping centres



schools and universities



highrise buildings



industrial buildings



convention centres



hospitals and medical centres



childcare and agecare



pools and aqua-centres



hotels and Air bnb



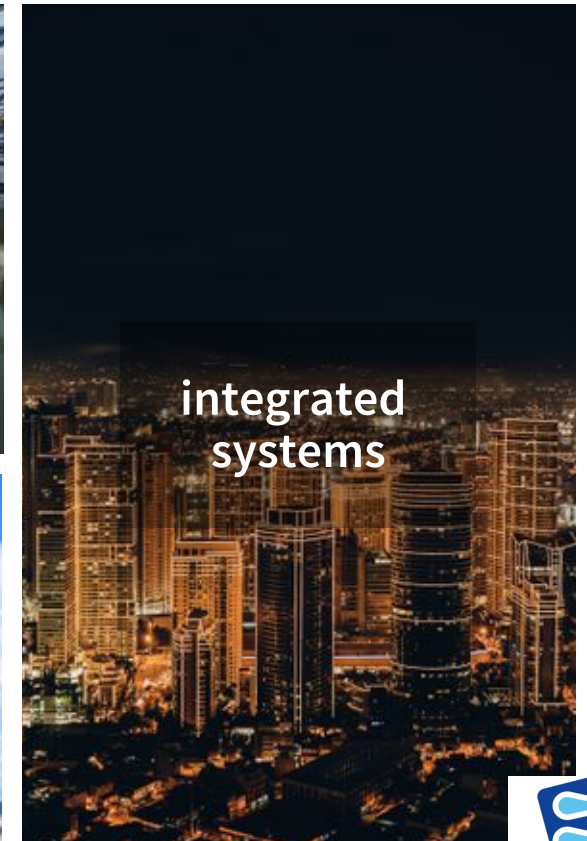
airports and terminals



restaurants

Our niche solutions

We offer solutions with added value for large industrial, commercial and governmental buildings and infrastructures





ellenex products

filter performance monitoring

- pressure
- temperature
- flow

as well as:

- air quality
- humidity
- vibration



Other key products:



PTS2

for pipeline
pressure and
tank level
monitoring



PLS2

for precision
level
monitoring



CSD2

for
conductivity
and salinity



TTS2

for water
temperature
monitoring



TRB2

for water
turbidity
checking

ellenex electronic interfaces

I2C

mV

mV/V

Pulse

RS485

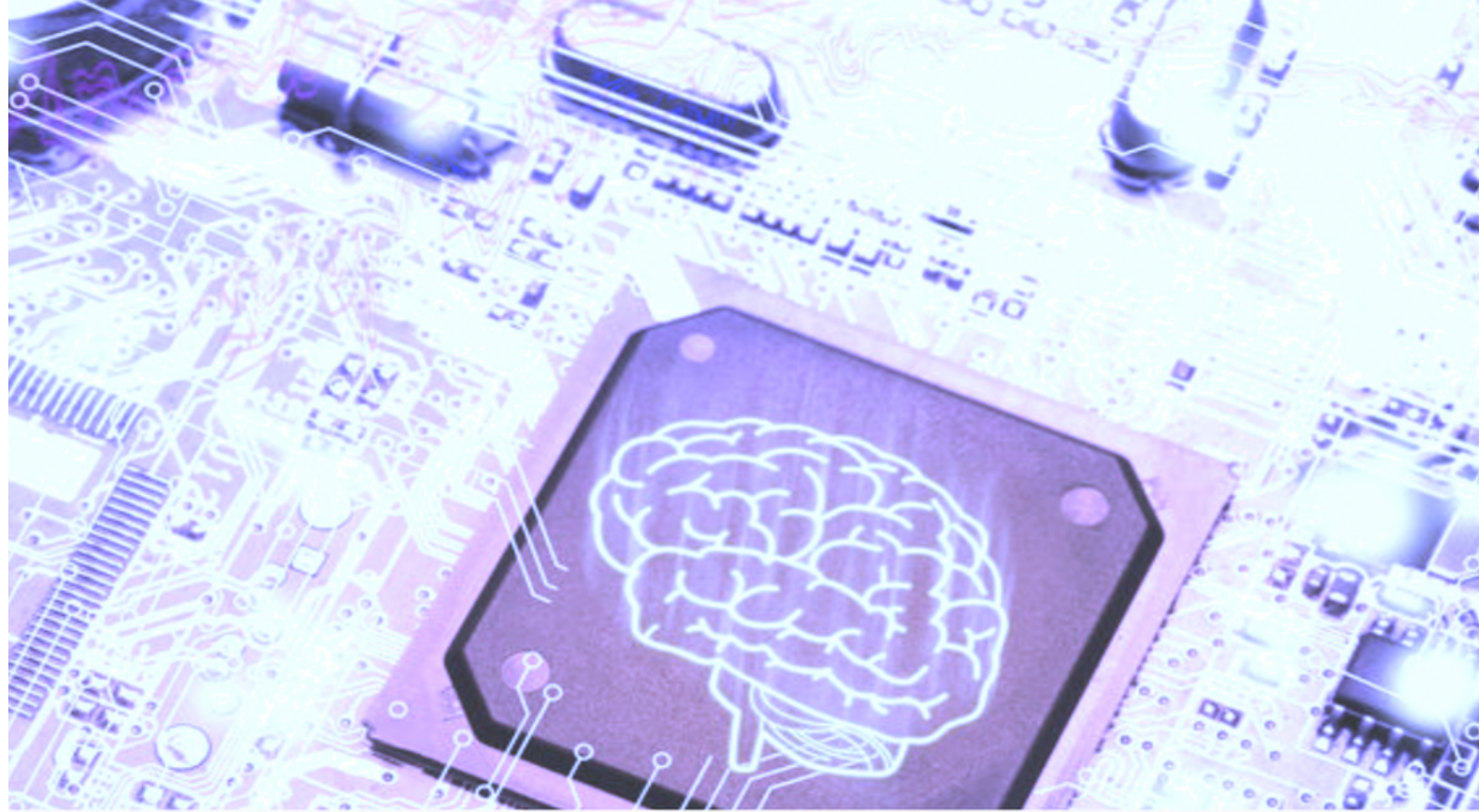
PT1000/ 100

4-20mA

0-5/ 0-10V

Dry contact

Multi-channel



NB-IoT



SATELLITE



LoRaWAN



SIGFOX



WIREPAS




Wi-Fi



ellenex software platform

Designed for enterprise
Role-based access control
API-first
Simple and scalable
Custom workflow engine
Custom device parameters
Multi-channel alerting
BMS system integratable



An abstract graphic on the left side of the slide. It features a cluster of translucent blue cubes of various sizes, some of which are stacked. One cube is a vibrant orange and is positioned slightly above and to the right of the main cluster. A bright, glowing light source is visible behind the orange cube, creating a lens flare effect that illuminates the surrounding blue cubes and the background.

if you are a service provider for commercial
buildings or residential complexes,

Just send an email to
sales@ellenex.com and we will contact
you to discuss your application.

Thank you



IoT Solutions in Action

E: sales@ellenex.com

W: www.ellenex.com